

Clinical Significance of ALK-1 Gene Abnormalities in Diffuse Large Cell Lymphoma

L. Korashy¹, H. El-Zawahry², S. Abdou³, D. Shahin⁴, F. Sherif¹, W. Farrag⁵, O. Abdel-Khalik¹, H. Salem⁶ and A. El-Sebaaie⁷

¹Department of Clinical Oncology, Faculty of Medicine, Tanta University. ²Department of Medical Oncology, National Cancer Institute, Cairo University. ³Department of Clinical Pathology, Faculty of Medicine, Tanta University. ⁴Department of Clinical Pathology, Faculty of Medicine, Mansoura University. ⁵Department of Internal Medicine, Faculty of Medicine, Tanta University. ⁶Department of Clinical Pharmacy, Faculty of Pharmacy, Al-Azhar University. ⁷Department of Pathology, International Medical Center, Egypt. Corresponding author email: Doaashahin2007@yahoo.com

Abstract

Objectives: To detect relative frequency of anaplastic lymphoma kinase (ALK-1) gene abnormality in diffuse large cell lymphoma (DLCL) using fluorescence in situ hybridization (FISH), and correlate its presence with clinicopathological features which may be useful for choice of therapy and predict survival in newly diagnosed cases.

Patients and methods: A prospective study was done between March 2004 and October 2009. Fifty patients newly diagnosed with DLCL were enrolled into the study. Immunophenotyping was done and detection of ALK-1 gene abnormalities were carried out by immunohistochemically (IHC) and FISH. Patients that proved to be ALK-1 positive were treated with standard cyclophosphamide-hydroxydaunorubicin-ondovin-prednisone (CHOP) protocol.

Results: All ALK +ve patients achieved complete remission (CR) vs. 93.5% CR and 6.5% partial remission (PR) for ALK -ve patients respectively. Disease free survival (DFS) at 24 months was 81.8% in the CHOP-14 group (ALK-1⁻) vs. 100% for the CHOP-21 group (ALK-1⁺). Overall survival (OS) at 30 months was 80.4% in the CHOP-14 group vs. 100% for the CHOP-21 group.

Keywords: ALK-1, FISH, IHC, ALCL

Clinical Medicine Insights: Oncology 2012;6:395–405

doi: [10.4137/CMO.S9920](https://doi.org/10.4137/CMO.S9920)

This article is available from <http://www.la-press.com>.

© the author(s), publisher and licensee Libertas Academica Ltd.

This is an open access article. Unrestricted non-commercial use is permitted provided the original work is properly cited.



Introduction

Diffuse large cell lymphoma (DLCL), the most common type of lymphoma in adults, can be cured by anthracycline based chemotherapy in only 35% to 40% of patients.¹ The multiple unsuccessful attempts to increase this rate suggest that diffuse large cell lymphoma is actually composed of several diseases that differ in responsiveness to chemotherapy. Support of this idea comes from a study of gene-expression profiles.²

Eastern Cooperative Oncology Group (ECOG) performance status, age, tumor stage, lactate dehydrogenase level and the number of sites of extranodal disease have prognostic value in diffuse large cell lymphoma and they are included in the international prognostic index (IPI). Although the index is of value, it has not been used successfully to stratify patients for therapeutic trials.³

Since the outcomes for patients within the same subgroup of DLCL varies, gene-expression profiles of DLCL could be used additionally by the IPI to predict the outcome of chemotherapy, and identification of different genes could be very helpful in the cure of the disease.⁴

Chromosomal translocation t(2;5)(p23;q35) has been reported in large cell lymphoma. This translocation has been cloned and shown to result in the fusion of the nucleophosmin (NPM) gene on chromosome 5 and the anaplastic lymphoma kinase (ALK) gene on chromosome 2. This fusion results in expression of an aberrant fusion protein, NPM/ALK. Anaplastic lymphoma kinase ALK is a novel receptor tyrosine kinase (RTKs) as it has an extracellular domain, a single transmembrane domain and an intracellular domain containing the tyrosine kinase activity.⁵ The nucleophosmin gene (NPM), as known as NPM, B23, numatrin, is an RNA-binding nuclear phosphoprotein of 38-kd that is completely expressed. Its cell cycle dependence function includes protein shuttling between the nucleus and the cytoplasm and thus functions as a carrier of newly synthesized protein into the nucleus.⁶ When NPM immunostaining is restricted to the cell cytoplasm and not present in the nucleus, a partner other than NPM is likely to be present.⁷ Recently, it has been demonstrated that ALK fusion proteins may occasionally be the result of ALK rearrangements other than NPM-ALK. Ten to twenty percent of ALKomas may thus carry ALK

rearrangements other than NPM-ALK. Examples already described are t(1;2)(q25;p23) resulting in a newly identified TPM3-ALK fusion gene, t(2;3)(p23;q21) fusing the TFG and ALK genes and inv(2)(p23;q35) creating the ATIC-ALK.⁸

The determination of ALK positivity is important because it denotes a significant favorable prognosis.^{9,10} Fluorescence in situ hybridization (FISH) is a very useful technique for detection of chromosomal abnormalities.¹¹ It is a highly specific and rapid test that should prove to be a useful adjunct to the currently available methods for detection of the t(2;5)(p23;q35).¹²

ALK is a viable target for therapeutic intervention and its inactivation might represent a pivotal approach for the treatment of ALK lymphomas as inhibition of ALK could induce biological changes capable of inhibiting cell growth and/or promoting cell death.¹³ Detailed understanding of the molecular pathogenesis of hematopoietic neoplasms might guide the development of improved therapies and can inform the design of novel therapeutic strategies.^{14,15}

A prospective study was done between March 2004 and October 2009 at Tanta University Hospital, Mansoura Oncology Centre and International Medical Center. Informed consent was obtained from all patients before immunohistochemical and molecular techniques (FISH) were conducted to detect the relative frequency of ALK-1 gene abnormalities in DLCL and its correlation with clinicopathological features. The predictive value of ALK-1 positivity on treatment response and survival in newly diagnosed cases was also explored.

Patients and Methods

Fifty patients histopathologically diagnosed as DLCL, aged 18 to 73 years, with performance status 0–2 were enrolled into the study. Immunophenotyping for the cases was done using a panel formed of the antibodies CD20 (Dako Cat. No. M0755, clone: L26), CD3 (Dako Cat. No. M7254 clone: F7.2.38), CD15 (Dako Cat. No. M0733, clone: C3D-1) and CD30 (Dako Cat. No. M0751, clone: Ber-H2).

Detection of ALK-1 gene abnormalities by immunohistochemistry and FISH technique. Immunohistochemistry was performed by using anti-ALK-1 monoclonal antibody (Dako Cat. No. M7195, clone: C3D-1). Dako Envision staining system



(Cat. No. K 4006) was used for detection of all immunohistochemical tests done.

The basic FISH procedure was carried out as described by Remstein 2000.¹⁶ Nuclear isolation from paraffin-embedded tissue were done as followed: Two 50 μ m sections were cut from each paraffin block and transferred to a 15 mL centrifuge tube. Specimens were deparaffinized with xylene (2 mL \times 5 mL for 10 min each) and treated with an ethanol to water series (100%, 85%, 70%) for 10 min each. Nuclei were extracted using a 0.005% pepsin solution for 2 h at 37 °C. The specimens were vortexed vigorously for 1 min and the isolated nuclei suspension was filtered into new 15 mL centrifuge tubes using a 40 μ m nylon mesh and a transfer pipette. Nuclei were pelleted by centrifugation at 1200 r.p.m. for 8 min, washed twice in 5 mL phosphate-buffered saline (PBS) and resuspended in a small volume of PBS.

Slide Preparation for FISH

One drop of cell suspension was placed on a slide and dried at 65 °C for 10 min. Slides were placed in methanol:acetic acid (3:1) for 10 min and air-dried. The slides were then heated at 90 °C for 10 min and treated with 2 \times standard saline citrate (SSC; 300 mmol/L sodium chloride, 30 mmol/L sodium citrate) for 15 min at 37 °C, dehydrated with an ethanol series (70%, 85%, 100% for 1 min each) and air-dried. The slides were placed in 0.1 mmol/l citric acid (pH 6.0) at 85 °C for 1 h, dehydrated with an ethanol series (70%, 85%, 100%) and air-dried. Slides were treated with a pepsin solution (0.005% pepsin in a 0.01 N HCl solution) at 37 °C for 30 min, dehydrated with an ethanol series (70%, 85%, 100%) and air-dried.

Codenaturation of the Probe and the Slide

Using the Vysis Locus Specific Identifiable (LSI) Probe (Vysis, Inc., 3100 Woodcreek Drive, Downers Grove, IL, USA, Cat. No. 32-190069). The LSI ALK dual color, break apart rearrangement probe is designed to detect the known 2p23 rearrangements that occur in t(2;5) and its variants. The t(2;5) has been shown to fuse the NPM gene located on chromosome 5q35 with the gene on chromosome 2p23. This NPM/ALK gene fusion gives rise to a chimeric protein that is over expressed. The LSI ALK dual color, breakapart rearrangement probe contains two

differently labeled probes on opposite sides of the breakpoint of the ALK gene. A probe of approximately 250 kb for the telomeric side of the ALK breakpoint is labeled with spectrum orange. The centromeric probe is approximately 300 kb and labeled with spectrum green. The probe was prepared according to manufacturer instruction with modification of hydride system program so that the melting temperature was 80 °C for 8 min and hybridization temperature was 37 °C overnight. Posthybridisation washes using 0.4X SSC/0.3% NP-40 wash solution at 73 °C for 2 mins and 2X SSC/0.1% NP-40 wash solution at room temperature for 2 mins. Ten μ L DAPI counter stain were added at the marked area of the slide, then a clean cover slip was applied and sealed well.

Image Capture and Slide Screening

Digital images were captured using a CCD camera (Cohou) mounted on a fluorescence microscope (Olympus BX60) equipped with selective filters for fluorescein, rhodamine, and DAPI, and controlled by Applied image analysis software. At least 200 nuclei were analyzed for each hybridization. Cells with an intact ALK locus have a fused orange—green signal on chromosome 2 as shown in Figure 5. If an ALK translocation has occurred, then the probe is split. The proximal spectrum green-labeled probe remains on the der (2), and the distal spectrum orange-labeled probe moves to the partner derivative chromosome as shown in Figure 6.

Treatment Design

Group (A) patients were ALK-1 positive and were treated with a standard CHOP protocol consisting of cyclophosphamide (750 mg/m² intravenously, doxorubicin (50 mg/m² intravenously), vincristine (1.4 mg/m² intravenously, maximum dose of 2 mg) on day 1, and prednisone (100 mg orally) given on days 1 to 5, the protocol recycled every 21 days (CHOP-21). Group (B) patients were ALK-1 negative and were treated with an intensified CHOP protocol consisting of cyclophosphamide (750 mg/m² intravenously, intravenously, doxorubicin (50 mg/m² intravenously), vincristine (1.4 mg/m² intravenously, maximum dose of 2 mg) on day 1, and prednisone (100 mg orally) given on days 1 to 5, the protocol recycled every 14 days (CHOP-14), with the patients receiving recombinant human granulocyte colony—stimulating



factors (G-CSF; filgrastim) subcutaneously if white blood cell count (WBC) less than $2.5 \times 10^9/L$ from days 10 to 13 at a dosage of 300 $\mu\text{g}/\text{day}$ or 480 $\mu\text{g}/\text{day}$ for patients less than 75 kg or 75 kg or more body weight, respectively.

Before every cycle of chemotherapy, complete clinical examination and complete hematological assessment was done (including complete blood picture, LDH, liver, kidney function and blood glucose) and toxicity was evaluated according to NCI toxicity criteria.

All the investigations done during the pretreatment period were repeated by the end of the 3rd cycle and properly assessed. The patients who achieved complete or partial remission received three additional cycles of chemotherapy. All patients received six cycles of chemotherapy. Patients with stable or progressive disease were shifted to salvage therapy.

Radiotherapy

In both groups, two weeks after the end of chemotherapy and with assurance of bone marrow recovery by normal blood picture, radiotherapy was delivered to sites of initial bulky disease (largest diameter ≥ 7 cm), to extranodal sites wherever feasible as well as to patients presented with Waldeyer's ring involvement using Cobalt-60 teletherapy machine. Radiation dose was 36 Gy delivered in 1.8 Gy daily fractions, 5 days a week. Radiotherapy fields were limited to regions of initial involvement.

Follow Up

Patients were seen weekly during treatment and then monthly in the first year, every 2 months in the second year, every 4–6 months thereafter or at any time if there was any complaint.

The follow up period ranged between 5 months and 40 months with a median of 16 months, the patients who discontinued their prescribed course of treatment or lost follow up early were excluded from the statistical analysis and survival results. Death within 4 weeks after the end of therapy from causes other than lymphoma was designated as therapy-related death. Evaluation of tumor response and end point was done according to the International Workshop criteria.¹⁷

Statistical Analysis

Statistical presentation and analysis of the present study was conducted using the mean, standard

deviation, analysis of variance [ANOVA] test, Chi-square correlation test, ROC curve, and Statistical Package for the Social Sciences (SPSS V.11). Kaplan-Meier method was used for estimating survival and log rank test to compare curves. The *P* value is significant at 0.05 levels.¹⁸

Results

According to the morphologic criteria and the immunohistochemistry; studies were done using CD3, CD20, CD30 and CD15 were an essential panel for our cases. The most common cells found were B-cell (37/50) at 74.0%, versus only 26.0% of those with the T/Null phenotype. CD3 was expressed in twelve patients, CD20 was expressed in 37 cases while eleven patients were positive for CD30. Co-expression of both CD3 and CD30 was seen in 6 cases while co-expression of both CD20 and CD30 was seen in 4 cases and all patients were negative for CD15. Accordingly 6 cases were diagnosed as ALCL (12.0%), the majority of patients (33/50) were diagnosed as DLBCL (66.0%), while 4 cases (8.0%) were of DLBCL-anaplastic variant, only one patient was diagnosed as null anaplastic and six patients (12.0%) were of peripheral T-cell, unspecified.

Anaplastic lymphoma kinase expression by immunohistochemistry was confined to (10.0%) 5 cases (4 patients with ALCL and the only case of null anaplastic, while none of the other pathological subtypes were labeled for ALK-1 Ab). 80% of the ALK-positive cases showed the morphology of the classic or common type, any cytoplasmic or nuclear staining was considered positive, as shown in Figures 2 and 3 while ALK⁻ cases include as shown in Figure 4. 37 (100.0%) B-phenotype and 8 (61.5%) T-phenotype. These results showed that ALK positive staining was confined to T/Null-phenotype only (38.5%).

The t(2;5)(p23;q35) chromosomal translocation and its variants were detected by FISH technique in the five T/null-ALCL cases that express ALK protein except one, which appeared as weak cytoplasmic staining by IHC (3 cases of ALCL and the null anaplastic case).

The concordance rate between IHC staining and FISH was 80% (4/5) with 100% specificity to FISH technique (Table 1).

These four cases received CHOP-21 (group A), while the ALK⁻ cases (46) received CHOP-14 (group B), in both groups eighteen patients



Table 1. Concordance between methods for ALK detection.

Case	Morphologic variant	ALK-1 IHC	ALK-FISH
1	Small cell	+ (N,C)	+
2	Common	+ (N,C)	+
3	Common	+(N,C)	+
4	Common	+ (C,M)	+
5	Common	+ (C)	-

Abbreviations: C, cytoplasmic staining; N, nuclear staining; M, membranous staining.

(two cases in group A vs. sixteen in group B) received radiotherapy as a form of consolidation therapy (36 Gy/4 weeks/20 fraction). In group B, twenty-six patients received granulocyte colony stimulating factor; the maximum number used was three doses/cycle while the minimum was one/cycle (Table 2). No evident treatment delay was observed in all treatment groups as the treatment duration almost matched the planned duration.

All ALK⁺ patients achieved CR vs. 93.5% CR and 6.5% partial remission (PR) for ALK⁻ patients respectively. Hematological toxicities in the form of leucopenia and anemia were more common in CHOP-14 group. The actual estimate of DFS at 24 months was 81.8% in the CHOP-14 group (ALK-1⁻) vs. 100% for the CHOP-21 group (ALK-1⁺). The actual OS at 30 months was 80.4% in the CHOP-14 group vs. 100% for the CHOP-21 group (Table 3).

Statistically significant differences in term of treatment outcome were found as regarding IPI and ALK-1 rearrangement ($P < 0.05$).

Toxicity 2ry to the drug effect are seen in Table 4 which illustrates the most frequently noticed toxicities in the both groups, (NCI CTC 1999, were used in defining the grades of toxicity). Alopecia is the most com-

Table 2. ALK-1 gene expression and treatment received.

	No.	%
ALK-1 (IHC)		
Negative	45	90.0%
Positive	5	10.0%
CHOP-14	46	92.0%
CHOP-21	4	8.0%
RT	18	36.0%
G-CSF	26	52.0%

Note: All ALK-positive patients had systemic B symptoms at presentation and the difference is statistically significant $P < 0.07$.

Table 3. Evaluation of early response (after 3rd cycle) of treatment relevant to ALK-1 positivity.

ALK-1 rearrangement	Response		Total
	CR	PR	
Positive (CHOP-21)			
No.	4	0	4
%	100.0%	0%	100.0%
Negative (CHOP-14)			
No.	37	9	46
%	80.4%	19.6%	100.0%
Total			
No.	41	9	50
%	82.0%	18.0%	100.0%

Note: $P = 0.44$.

mon toxicity occurring in all patients of both groups. Hematological toxicities in the form of leucopenia and anemia occurred more commonly in the CHOP-14 group, while no one was affected by thrombocytopenia in either group. Infection only occurred in the

Table 4. Toxicities according to treatment arms.

Toxicity	CHOP-21		CHOP-14		P value
	No.	%	No.	%	
Leucopenia					
G1	3	75.0	12	26.1	0.37
G2	0	0	12	26.1	
G3	0	0	8	17.4	
G4	0	0	6	13.0	
Anemia					
G1	0	0	1	2.2	0.14
G2	1	25.0	23	50.0	
G3	2	50.0	19	41.3	
G4	0	0	3	6.5	
Infection	0	0	7	15.2	1.0
Nausea/vomiting (N/V)					
G1	2	50.0	38	82.6	0.17
G2	1	25.0	3	6.5	
Diarrhea					
G1	0	0	3	6.5	0.17
G2	1	25.0	0	0	
G3	0	0	1	2.2	
Oral mucosities	1	25.0	10	21.7	1.0
Hyperglycemia					
G1	2	50.0	26	56.5	0.24
G2	0	0	12	26.1	
G3	1	25.0	2	4.3	
Hepatic toxicity	0	0	2	4.3	1.0
Neuro toxicity	2	50.0	12	26.1	0.3
Renal toxicity	0	0	1	2.2	1.0
Alopecia	4	100.0	46	100.0	1.0
Total	4	100.0	46	100.0	

Note: Side effects at least once.

CHOP-14 group (7 cases) which is usually associated with neutropenia and systemic fungal infection with systemic use of antibiotic, antifungal and growth factors. In the CHOP-21 group, gastrointestinal toxicities include N/V, diarrhea and mucosities occurring in 75%, 25% and 25% vs. 89.1%, 8.7% and 21.7% in the CHOP-14 group respectively. No cardiac or lung toxicities were detected in either group.

There were three cases with therapy associated deaths (toxic deaths), all in CHOP-14 group. Two cases had documented septicemia with G4 neutropenia while the third one fell into a coma with unknown etiology and died. In the CHOP-14 arm, six patients relapsed vs. none in the CHOP-21 arm. All relapsed patients received second line salvage chemotherapy.

Disease Free Survival

The actual estimate of DFS at 24 months was 81.8% in the CHOP-14 group (ALK-1⁻) vs. 100% for the CHOP-21 group (ALK-1⁺), however no statistically significant difference was found between the two groups (*P* = 0.45).

Overall Survival

The actual OS at 30 months was 80.4% in the CHOP-14 group (ALK-1⁻) vs. 100% for the CHOP-21 group (ALK-1⁺), however no statistically significant difference was found between the two groups (*P* = 0.48) (Figure 1).

Discussion

The biologic insights provided by molecular studies should allow for more targeted therapies to be

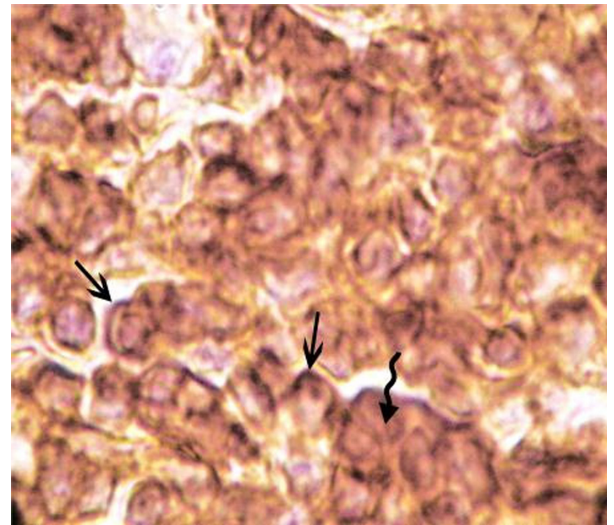


Figure 2. A case of anaplastic large T-cell lymphoma positive for ALK-1 antibody with membranous and cytoplasmic expression.

developed, which will increase treatment choice and the possibility of tailored therapy in the future.¹⁹

The NPM/ALK is an oncogenic fusion protein expressed in about 50% of ALCL cases, and has emerged as a novel tumorigenic player in several human cancers.²⁰

This protein derives from the t(2;5)(p23;q35) chromosomal translocation that fuses the catalytic domain of the tyrosine kinase, anaplastic lymphoma kinase, with the dimerization domain of nucleophosmin protein.²¹ It promotes tumorigenesis through its functional and physical interactions with various biologically important proteins. The identification of these interacting proteins has proven to be useful to further our understanding of NPM-ALK-mediated

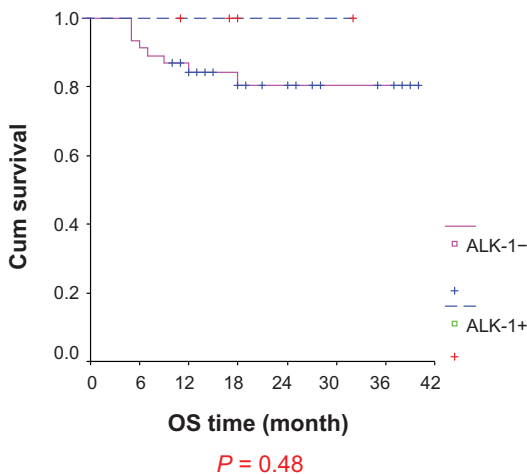


Figure 1. Overall survival of both groups.

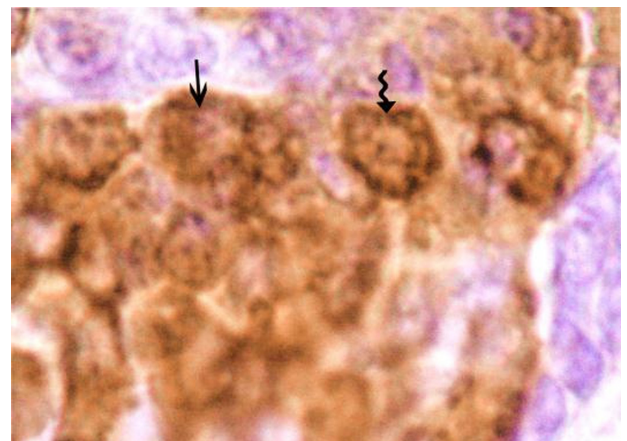


Figure 3. A case of anaplastic large T-cell lymphoma positive for ALK-1 antibody with nuclear and cytoplasmic expression.

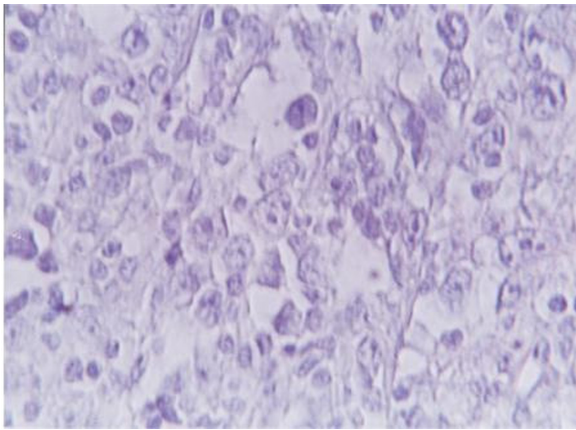


Figure 4. A case of anaplastic large T-cell lymphoma negative for ALK-1 antibody.

tumorigenesis. ALK-positive neoplasms represent a distinct entity. Because their morphology is often neither anaplastic nor large cell, it was suggested that they should hence forth be referred to as ALK lymphomas.^{9,22}

The present study was designed to evaluate dose dense CHOP regimen (every 2 weeks) and CHOP regimen (every 3 weeks) in ALK-negative and ALK-positive DLCL patients within the age range of 18–73 years in order to identify which treatment regimen could be associated with a better outcome and reduced toxicity irrespective of age stratification.

Among the fifty patients included in the current study, ages ranging from 18–73 years with a median age of 52.00 years, similar findings were reported by Egyptian investigators.^{23,24} This pattern was different in western countries, where in an American study, the median age of NHL patients was 65 years.²⁵

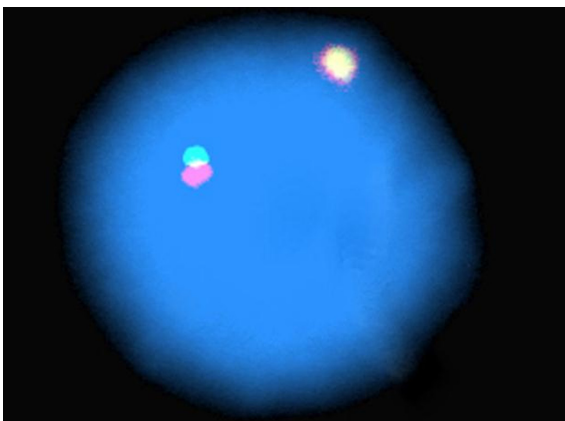


Figure 5. Normal interphase shows an intact ALK loci have a fused orange-green signals in both normal chromosome 2.

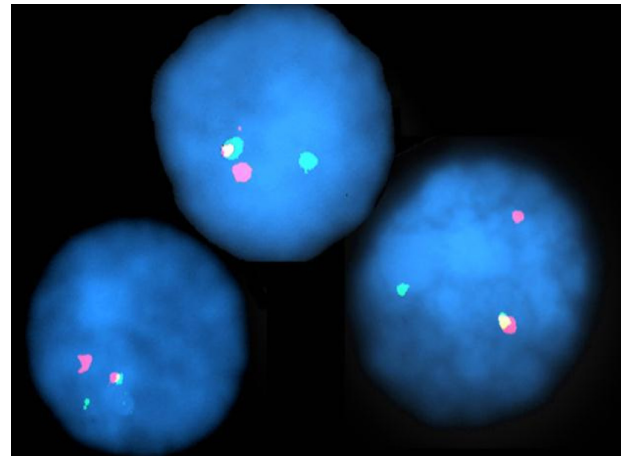


Figure 6. ALK split-apart FISH probe shows split orange and green signals, the proximal spectrum green-labeled probe remains on the derivative chromosome 2, and the distal spectrum orange-labeled probe moves to the partner derivative chromosome, intact ALK locus have a fused orange-green on chromosome 2.

This difference in age distribution could be explained by the population structure in Egypt where the mean life span is less than in western countries.

Of the patients included in the study, 58.0% were male while 42.0% were female. As in most other series, male predominance was shown in this study, with males to female ratio of 1.4:1 which is similar to that reported by Pulford et al²⁶ and Wunderlich et al.²⁷ However, it was lower than reported by Egyptian authors 1.8:1, 1.9:1 and 2.8:1,^{23,28,29} while in western countries it was 1.6:1.³⁰

Serum LDH was above normal in 48% of our patients. This was in agreement with the results of Wunderlich et al.²⁷ As in most other series, B-phenotype predominance was shown in this study (74.0%) vs. 26.0% of cases with T/Null-cell phenotype and this is similar to that reported by Itoh et al.³¹ However it was lower than reported by Pfreundschuh et al.³²

The majority of patients (70%) had good PS (0–1) and 30% had bad PS (2). Systemic B symptoms were encountered at the onset of disease in 40% of patients, this is in agreement with that reported by Itoh et al.³¹

In the present study, extranodal presentation represent only 10% of cases which is lower than that reported by Pulford et al²⁶ and Wunderlich et al²⁷ where extranodal disease represented 38% and 31% respectively.

Bone marrow involvement was encountered in 10% of cases. This is in agreement with Pfreundschuh et al³³



who reported incidence of 11.6% with bone marrow involvement. On the other hand, our figures are lower than reported by Wunderlich et al²⁷ where 19% suffered from bone marrow involvement.

A total of 50 cases were analyzed for expression of ALK protein by immunohistochemistry staining with ALK-1 Ab. Five out of fifty cases (10%) were found to be ALK-1 positive by IHC, they constitute 4/6 ALCL (66.6%) and the case with anaplastic null large cell phenotype. This was consistent with Falini et al³⁴ Gascoyne et al³⁵ Drexler et al³⁶ Savage et al³⁷ EL Sawi,³⁸ Rizvi et al³⁹ and Falini et al⁴⁰ whom found that 50%–75% of ALCL cases express ALK protein.

About 80% of the ALK-positive cases showed the morphology of the classic or common type, this was similar to that reported by Liang et al.⁴¹ However all DLBCL cases were negative for ALK-1 immunostaining. These were in accordance with the results obtained by Benharroch et al²² and Colleoni et al⁴² who didn't find ALK protein in DLBCL. On the contrary, Kadin and Moris,⁴³ and Kutok and Aster,⁴⁴ found that some DLBCL express ALK protein. In addition, Gascoyne et al⁴⁵ describes 6 cases of ALK positive DLBCL, while Lee et al⁴⁶ reported three cases and Beltran et al⁴⁷ reported four cases.

ALK protein expression by immunohistochemical staining displayed a combined nuclear and cytoplasmic pattern in three cases. In one case, this suggests NPM-ALK fusion, cytoplasmic and membranous stain. In another case, it suggests fusion to a variant partner gene, as the staining was restricted to the cytoplasm. This is in agreement with reports by Benharroch et al²² Falini et al⁴⁸ and Liang et al.⁴¹

Five cases (10.0%) were found to be ALK positive by IHC while ALK abnormalities were detected by FISH technique in four of them. The negative case by FISH technique was the situation where ALK protein was expressed weakly in the cytoplasm. This may be attributed to technical problem which lead to false positive staining of the cytoplasm, as formalin stain due to issues with fixation lead to formalin precipitation.

Both ALK-1 immunostaining and FISH detection of t(2;5) could be used as a marker for ALK-positive cases however FISH technique is a more specific parameter for discrimination. This is in agreement

with Mathew et al⁴⁹ Drexler et al³⁶ Cessna et al⁵⁰ Paternoster et al⁵¹ and Cataldo et al.⁵² Contrary to our results, Fan and Rizkalla⁵³ reported that immunohistochemical studies using antibody ALK-1 and FISH for ALK gene rearrangement, are equally effective for identifying patients with ALCL irrespective to variant translocations.

Analysis of the clinicopathological features of the ALK-positive group versus the ALK-negative group revealed some differences; ALK-1 positive cases were common in younger ages while ALK-negative patients tended to be older, confirming the results of Falini et al³⁴ Leoncini et al,⁵⁴ Fan et al⁵⁵ and Rizvi et al³⁹ who found ALK-positive cases mainly in young patients. All ALK positive cases had B symptoms which in agreement with Rizvi et al.³⁹

In the current study, three ALK⁺ patients were with early stages, while those with stage III and IV represent 25% of positive cases vs. 32% of ALK⁻ cases which is lower than reported by Kutok and Aster;⁴⁴ Rizvi et al.³⁹ This difference may be due to small sample size.

Serum LDH was high in all ALK-positive patients. This was higher than reported by Gascoyne et al³⁵ and Weisenburger et al⁵⁶ whom found high serum LDH in 31% and 45% respectively.

The majority of ALK-positive and ALK-negative patients fell into the low risk IPI group. However, the remainder had an IPI score of >2. This is in comparable with other series Savage et al.³⁷

Concerning phenotype in DLCL cases, there is highly significant difference found between ALK-1 abnormalities and cell lineage of DLCL cases, where all ALK-positive cases were limited to T/null-ALCL, and all B-phenotype were ALK-1 negative. These results were similar to those obtained by Colleoni et al⁵⁷ and EL Sawi³⁸ who noted that all ALK positive cases were of T-phenotype and none was of B-phenotype. On the contrary, Gascoyne et al³⁵ and Drexler et al³⁶ found that 8%–14% of ALCL-B phenotype express ALK protein.

The four ALK-positive cases received CHOP-21 while the ALK⁻ cases (46) received CHOP-14.

All patients in group A attained complete remission (100.0%), compared to 93.5% CR, and 6.5% PR in group B, ($P = 0.77$). In the CHOP-14 arm, the CR rate (93.5%) is higher than the reported one in



the German study, Pfreundschuh et al⁵⁸ (CR: 79% in NHL-B1 trial, and CR: 76% in NHL-B2 trial), however, two trials by Pronzato et al⁵⁹ and Itoh et al³¹ in phase II studies showed inferior results (CR: 40% and 60% respectively). Regarding the overall response, published data by Gregory et al⁶⁰ reported overall response of 89%, but with lower CR rate of 43%.

In the CHOP-21 arm, the CR rate (100.0%) is better than the reported one in the German study, Pfreundschuh et al^{32,58} (CR: 80% in NHL-B1 trial, and CR: 60% in NHL-B2 trial).

These results could be attributed to different inclusion criteria, non stratified age limit, small sample size and specificity of DLCL subtypes as well as selection of 3-week or 2-week CHOP scheme according to ALK-1 gene rearrangement.

In the present study, the actuarial estimate of disease free survival at 2 years was 81.8% vs. 100% for the CHOP-14 and CHOP-21 respectively, with no statistically significant difference between the two groups ($P = 0.4$).

In the CHOP-14 arm, DFS of 81.8% better than DFS of 43%, 52%, 58%, and 44% reported by Itoh et al³¹ Gregory et al⁶⁰ and Pfreundschuh et al⁵⁸ (B1 and B2) respectively. In the CHOP-21 arm, published data by Pfreundschuh et al⁵⁸ showed DFS of 69% in B1 trial, and only 41% in B2 trial, both results were highly inferior to our results.

The actuarial estimate of overall survival at 30 months was 100% vs. 80.4% for the group A and group B, however no statistically significant difference was found between the two groups ($P = 0.48$).

In the CHOP-14 arm, OS (80.4%) was better than those reported by the Japanese study (42%) and the German study B2 trial (53%), as well as when compared to the data published by Gregory et al⁶⁰ (OS of 77%) and OS of the German study B1 trial (84%). In the CHOP-21 arm, OS (100%) was higher than those showed by Pfreundschuh et al^{32,58} in B1 trial (80%), and NHL B2 trial (46%).

These results of disease free survival and overall survival should be analyzed carefully as these trials have different patient populations with different characteristics. In addition the median follow up duration varies between different trials. For example,

Itoh et al³¹ had a follow up duration of 3 years while Gregory et al⁶⁰ used 1.7 years and Pfreundschuh et al⁵⁸ 5 years. Longer follow up in this study may affect the result comparability. All patients in group A attained complete remission (100.0%), compared to 93.5% CR, and 6.5% PR in group B, ($P = 0.77$).

Immunohistochemical detection of ALK-1 rearrangement is a good negative test, but its positivity needs confirmation by the FISH technique especially if it affects the treatment strategy. The current outcome in ALK-positive disease is favorable with standard CHOP regimen while intensified CHOP regimen is well tolerated for ALK negative patients. This offers a better outcome and is associated with low morbidity and mortality.

The four ALK-positive cases received CHOP-21 while the ALK negative cases (46) received CHOP-14. These are in keeping with most other series who reported that patients with ALK-positive ALCL should be treated with standard CHOP chemotherapy (CHOP-21) as it is expected to have a better outcome. This may be due to the fact that ALK-positive cases are associated with younger aged patients, which could influence survival. ALK-positive cases are also associated with higher proliferation and with higher mitotic activity thus making them more responsive to treatment. Kutok and Aster⁴⁴ reported, however, that a relatively young age at presentation may not account for the favorable outcome of ALK⁺ ALCL, as age was not an independent prognostic indicator in multivariate analyses. Accumulated data, as presented in numerous studies, strongly suggests that standard CHOP is an inadequate therapy for most individuals with ALK-negative large cell lymphoma.^{37,61}

In addition to such well-known factors as a normal serum LDH and an IPI score of ≤ 3 , ALK protein expression by the tumor cells is an independent prognostic factor that predicts a favorable clinical outcome. Aberrant ALD expression is critical in the definition of DLCL as a disease entity, and we believe that the inclusion of this biologic marker as a diagnostic criterion further refines this heterogeneous category. Therefore, we suggest that larger studies be performed to accurately evaluate the frequency and types of ALK gene rearrangement in Egyptian patients with DLCL.



Our improved understanding of the molecular pathogenesis of ALK⁺ ALCL promises to lead to more specific, effective, and less toxic therapies. Lessons learned in the treatment of other neoplasms with tyrosine kinases inhibitors, in combination with other new drugs targeting cyclin/cdk signaling⁶² are likely to be applied to the treatment of ALK⁺ ALCL in the future. This strategy is even more promising in ALK-positive malignancies.

Conclusions

ALK protein expression by the tumor cells is an independent prognostic factor that predicts a favorable clinical outcome with standard CHOP regimen. The FISH is powerful technique for detection of nucleophosmin (NPM)-ALK rearrangement.

Author Contributions

All the authors shared the study design, data collection and literature research. El-Sebaaie A was responsible for performing the IHC. Abdou S and Shahin D were responsible for performing Immunophenotyping, FISH and helped in writing the initial version of the manuscript and in the statistical analysis. Salem H. helped in data collection and literature research, and writing the initial version of the manuscript. Korashy L, Sherif F, El-Zawahry H, Farrag W. and Abdel-Khalik O. assembled the patients' cohorts, treatment design, coordinated clinical data collection, critically revised the statistical analysis of the clinical results and wrote the final version of the manuscript.

Funding

Author(s) disclose no funding sources.

Competing Interests

Author(s) disclose no potential conflicts of interest.

Disclosures and Ethics

The authors have read and confirmed their agreement with the ICMJE authorship and conflict of interest criteria. All the authors of this paper report no conflicts of interest. All the authors of this paper confirmed that this article is unique and not under consideration or published in any other publication, and that they have permission from rights holders to reproduce any copyrighted material.

References

- Mohammad RM, Al-Katib A, Aboukameel A, Doerge DR. Genistein sensitizes diffuse large cell lymphoma to CHOP (cyclophosphamide, doxorubicin, vincristine, prednisone) chemotherapy. *Mol Cancer Ther.* 2003;2(12):1361–8.
- Lossos IS and Morgensztern D. Prognostic Biomarkers in Diffuse Large B-Cell Lymphoma. *J Clin Oncol.* 2006;24(6):995–1007.
- Rosenwald A, Wright G, Chan WC, et al. The use of molecular profiling to predict survival after chemotherapy for diffuse large-B-cell lymphoma. *N Engl J Med.* 2002;346(25):1937–47.
- Hans CP, Weisenburger DD, Greiner TC, et al. Confirmation of the molecular classification of diffuse large B-cell lymphoma by immunohistochemistry using a tissue microarray. *Blood.* 2004;103(1):275–82.
- Stoica GE, Kuo A, Aigner A, et al. Identification of anaplastic lymphoma kinase as a receptor for the growth factor pleiotrophin. *J Biol Chem.* 2001;276(20):16772–9.
- Naoe T, Suzuki T, Kiyoi H, Urano T. Nucleophosmin: a versatile molecule associated with hematological malignancies. *Cancer Sci.* 2006;97(10):963–9.
- Trinei M, Lanfrancone L, Campo E, et al. A new variant anaplastic lymphoma kinase (ALK)-fusion protein (ATIC-ALK) in a case of ALK-positive anaplastic large cell lymphoma. *Cancer Res.* 2000;60(4):793–8.
- Maes B, Enrijk VV, Wlodarska I, et al. The NPM-ALK and the ATIC-ALK fusion genes can be detected in non-neoplastic cells. *Am J Pathol.* 2001;158(6):2185–93.
- Salaverria I, Beà S, Lopez-Guillermo A, et al. Genomic profiling reveals different genetic aberrations in systemic ALK-positive and ALK-negative anaplastic large cell lymphomas. *Br J Haematol.* 2008;140(5):516–26.
- Palmer RH, Vernersson E, Grabbe C, Hallberg B. Anaplastic lymphoma kinase: signalling in development and disease. *Biochem J.* 2009;420(3):345–61.
- Rassidakis GZ, Goy A, Medeiros LJ, et al. Prognostic significance of MUC-1 expression in systemic anaplastic large cell lymphoma. *Clin Cancer Res.* 2003;9(6):2213–20.
- Gregory SA, Trümper L. Chemotherapy dose intensity in non-Hodgkin's lymphoma: is dose intensity an emerging paradigm for better outcomes? *Ann Oncol.* 2005;16(9):1413–24.
- Piva R, Pellegrino E, Mattioli M, et al. Functional validation of the anaplastic lymphoma kinase signature identifies CEBPB and Bcl2A1 as critical target genes. *J Clin Invest.* 2006;116(12):3171–82.
- Kelleher FC, Mc Dermott R. The emerging pathogenic and therapeutic importance of the anaplastic lymphoma kinase gene. *Eur J Cancer.* 2010;46(13):2357–68.
- Chiarle R, Voena C, Ambrogio C, Piva R, Inghirami G. The anaplastic lymphoma kinase in the pathogenesis of cancer. *Nat Rev Cancer.* 2008;8(1):11–23.
- Remstein ED, Kurtin PJ, Buño I, et al. Diagnostic utility of fluorescence in situ hybridization in mantle-cell lymphoma. *Br J Haematol.* 2000;110(4):856–62.
- Cheson BD, Horning SJ, Coiffier B, et al. Report of an international workshop to standardize response criteria for non-Hodgkin's lymphomas. NCI Sponsored International Working Group. *J Clin Oncol.* 1999;17(4):1244.
- Jaccard J, Becker MA. Statistics for the behavioural sciences. 1997 3rd ed.
- Sehn LH. Optimal use of prognostic factors in non-Hodgkin lymphoma. *Hematology Am Soc Hematol Educ Program.* 2006:295–302.
- Barreca A, Lasorsa E, Riera L, et al. Anaplastic lymphoma kinase in human cancer. *J Mol Endocrinol.* 2011;47(1):R11–23. Print Aug 2011.
- Tartari CJ, Gunby RH, Coluccia AM, et al. Characterization of some molecular mechanisms governing autoactivation of the catalytic domain of the anaplastic lymphoma kinase. *J Biol Chem.* 2008;283(7):3743–50.
- Benharroch D, Meguerian-Bedoyan Z, Lamant L, et al. ALK-positive lymphoma: a single disease with a broad spectrum of morphology. *Blood.* 1998;91(6):2076–84.



23. El-Bolkainy N, Nouh A, El-bolkainy T. Topographic pathology of cancer. 3rd ed. The National Cancer Institute, Cairo University. 2005;1-7: 157-70.
24. Ibrahim AS, Seif-El Din IA, Ismail K, Hablas A, et al. Cancer in Egypt, Gharbiah: Terminal Report of 2000-2 Gharbiah Population-Based Cancer Registry, 2nd ed. 2007.
25. Prosnitz LR, Andrea NG. Non-Hodgkin's lymphoma. Perez and Brady's: Principles and Practice of Radiation Oncology, 5th ed. Lippincott Co., Philadelphia; 2008:1739-60.
26. Pulford K, Falini B, Banham AH, et al. Immune response to the ALK oncogenic tyrosine kinase in patients with anaplastic large-cell lymphoma. *Blood*. 2000;96(4):1605-7.
27. Wunderlich A, Kloess M, Reiser M, et al. Practicability and acute hematological toxicity of 2-and 3-weekly CHOP and CHOEP chemotherapy for aggressive non-Hodgkin's lymphoma: results from the NHL-B trial of the German high-grade non-Hodgkin's lymphoma study group (DSHNHL). *Ann Oncol*. 2003;4(6):881-93.
28. El-Gantiry MM, El-Mongy M, El-Naggar M. Assessment of treatment methods and results of adult non-Hodgkin's lymphoma of waldeyer's ring. *Med J Cairo Univ*. 1998;66(4):817-25.
29. Mokhtar N, Gouda I, Adel I. Cancer Pathology Registry 2003-4 and Time Trend Analysis, Department of Pathology, The National Cancer Institute, Cairo University; 2007:46-50.
30. Fisher SG, Fisher RI. The epidemiology of non-Hodgkin's lymphoma. *Oncogene*. 2004;23(38):6524-34.
31. Itoh K, Ohtsu T, Wakita H, et al. Dose-escalation study of CHOP with or without prophylactic G-CSF in aggressive non-Hodgkin's lymphoma. *Ann Oncol*. 2000;11(10):1241-7.
32. Pfreundschuh M, Trümper L, Kloess M, et al. Two-weekly or 3-weekly CHOP chemotherapy with or without etoposide for the treatment of elderly patients with aggressive lymphomas: results of the NHL-B2 trial of DSHNHL. *Blood*. 2004;104(3):634-41.
33. Pfreundschuh M, Trümper L, Kloess M, et al. Two-weekly or 3-weekly CHOP chemotherapy with or without etoposide for the treatment of young patients with good-prognosis (normal LDH) aggressive lymphomas results of the NHL-B1 trial of DSHNHL. *Blood*. 2004;104(3):626-33.
34. Falini B, Pileri S, Zinzani PL, et al. ALK⁺ lymphoma: clinic-pathological findings and outcome. *Blood*. 1999;93(8):2697-706.
35. Gascoyne RD, Aoun P, Wu D, et al. Prognostic significance of anaplastic lymphoma kinase (ALK) protein expression in adults with anaplastic large cell lymphoma. *Blood*. 1999;93(11):3913-21.
36. Drexler HG, Gignac SM, von Wasielewski R, Werner M, Dirks WG. Pathobiology of NPM-ALK and variant fusion genes in anaplastic large cell lymphoma and other lymphomas. *Leukemia*. 2000;14(9):1533-59.
37. Savage KJ, Chanabhai M, Gascoyne RD, Connors JM. Characterization of peripheral T-cell lymphomas in a single North American institution by the WHO classification. *Ann Oncol*. 2004;15(10):1467-75.
38. EL Sawi RM. Molecular detection of t(2;5)(p23;q35) chromosomal translocation; Bcl-6 and clusterin protein expression in large cell lymphomas. M.D. Thesis, Faculty of Medicine, Benha University; 2005.
39. Rizvi MA, Evens AM, Tallman MS, Nelson BP, Rosen ST. T-cell non-Hodgkin lymphoma. *Blood*. 2006;107(4):1255-64.
40. Falini B, Nicoletti I, Bolli N, et al. Translocations and mutations involving the nucleophosmin (NPM1) gene in lymphomas and leukemias. *Haematologica*. 2007;92(4):519-32.
41. Liang X, Meech SJ, Odom LF, et al. Assessment of t(2;5)(p23;q35) translocation and variants in pediatric ALK⁺ anaplastic large cell lymphoma. *Am J Clin Pathol*. 2004;121(4):496-506.
42. Colleoni GWB, Bridge JA, Garicochea B, Liu J, Filippa DA, Ladanyi M. ATIC-ALK: A novel variant ALK gene fusion in anaplastic large cell lymphoma resulting from the recurrent cryptic chromosomal inversion, inv(2)(p23q35). *Am J Pathol*. 2000;156(3):781-9.
43. Kadin ME, Morris SW. The t(2;5) in human lymphomas. *Leuk Lymphoma*. 1998;29(3-4):249-56.
44. Kutok JL, Aster JC. Molecular biology of anaplastic lymphoma kinase-positive anaplastic large-cell lymphoma. *J Clin Oncol*. 2002;20(17): 3691-702.
45. Gascoyne RD, Lamant L, Martin-Subero JI, et al. ALK-positive diffuse large B-cell lymphoma is associated with Clathrin-ALK rearrangements: report of 6 cases. *Blood*. 2003;102(7):2568-73.
46. Lee HW, Kim K, Kim W, Ko YH. ALK-positive diffuse large B-cell lymphoma report of three cases. *Hematol Oncol*. 2008;26(2):108-13.
47. Beltran B, Castillo J, Salas R, et al. ALK-positive diffuse large B-cell lymphoma: report of four cases and review of the literature. *J Hematol Oncol*. 2009;2:11.
48. Falini B, Bigerna B, Fizzotti M, et al. ALK expression defines a distinct group of T/Null lymphomas (ALK Lymphomas) with a wide morphological spectrum. *Am J Pathol*. 1998;153(3):875-86.
49. Mathew P, Sanger WG, Weisenburger DD, et al. Detection of the t(2;5)(p23;q35) and NPM-ALK fusion in non-Hodgkin's lymphoma by two-color fluorescence in situ hybridization. *Blood*. 1997;89(5):1678-85.
50. Cessna MH, Zhou H, Sanger WG, Perkins SL. Expression of ALK1 and p80 in inflammatory myofibroblastic tumor and its mesenchymal mimics: A Study of 135 Cases. *Mod Pathol*. 2002;15(9):931-8.
51. Paternoster SF, Brockman SR, McClure RF, et al. A new method to extract nuclei from paraffin-embedded tissue to study lymphomas using interphase fluorescence in situ hybridization. *Am J Pathol*. 2002;160(6):1967-72.
52. Cataldo KA, Jalal SM, Law ME, et al. Detection of t(2;5) in anaplastic large cell lymphoma: comparison of immunohistochemical studies, FISH, and RT-PCR in paraffin-embedded tissue. *Am J Surg Pathol*. 1999;23(11): 1386-92.
53. Fan YS, Rizkalla K. Comprehensive cytogenetic analysis including multicolor spectral karyotyping and interphase fluorescence in situ hybridization in lymphoma diagnosis, a summary of 154 cases. *Cancer Genet Cytogenet*. 2003;143(1):73-9.
54. Leoncini L, Lazzi S, Scano D, et al. Expression of the ALK protein by anaplastic large-cell lymphomas correlates with high proliferative activity. *Int J Cancer*. 2000;86(6):777-81.
55. Fan YS, Rizkalla K. Comprehensive cytogenetic analysis including multicolor spectral karyotyping and interphase fluorescence in situ hybridization in lymphoma diagnosis, a summary of 154 cases. *Cancer Genet Cytogenet*. 2003;143(1):73-9.
56. Weisenburger DD, Anderson JR, Diebold J, et al. Systemic anaplastic large-cell lymphoma: results from the non-Hodgkin's lymphoma classification project. *Am J Hematol*. 2001;67:172-8.
57. Colleoni GWB, Bridge JA, Garicochea B, Liu J, Filippa DA, Ladanyi M. ATIC-ALK: A novel variant ALK gene fusion in anaplastic large cell lymphoma resulting from the recurrent cryptic chromosomal inversion, inv(2)(p23;q35). *Am J Pathol*. 2000;156(3):781-9.
58. Pfreundschuh M, Trümper L, Kloess M, Schmits R, et al. Two-weekly or 3-weekly CHOP chemotherapy with or without etoposide for the treatment of elderly patients with aggressive lymphomas: results of the NHL-B2 trial of DSHNHL. *Blood*. 2004;104(3):634-41.
59. Pronzato P, Lionetto R, Botto F, Pensa F, Tognoni A. High-dose intensity cyclophosphamide, epirubicin, vincristine and prednisone by shortened intervals and granulocyte colony-stimulating factor in non-Hodgkin's lymphoma: a phase II study. *Br J Cancer*. 1998;78:777-80.
60. Gregory SA, Case DC, Bosserman L, et al. Fourteen-day CHOP supported with granulocyte colony-stimulating factor in patients with aggressive non-Hodgkin's lymphoma: results of a phase II study. *Clin Lymphoma*. 2003;4(2):93-8.
61. Kaplan LD. Clinical Management of peripheral T-cell Lymphoma. *Amer Soc Clin Oncol*. 2007;1092-9118/07/445-60.
62. Bonvini P, Porzi E, Mussolin L, et al. The effect of the cyclin-dependent kinase inhibitor flavopiridol on anaplastic large cell lymphoma cells and relationship with NPM-ALK kinase expression and activity. *Haematologica*. 2009;94(7):944-55.